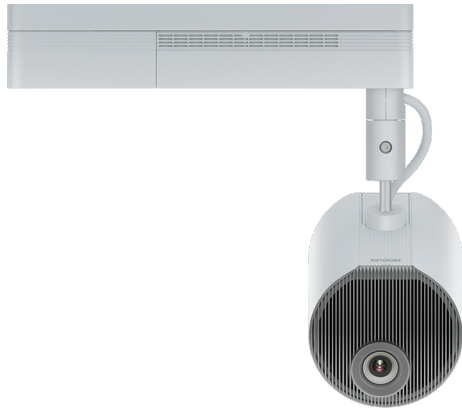


LightScene EV-110



DATASHEET / BROCHURE



The EV-110 is an innovative and versatile 2,200 lumens laser projection solution for creating experiential displays and digital signage.

Add movement and life to retail displays, hospitality events, visitor experiences, galleries, museums, corporate environments or exhibitions, with a low visual noise projector that blends into any environment. The EV-110 brings lighting and projection together, and perfectly combines high design, high image quality and installation flexibility.

Minimalist design - maximum impact

The LightScene EV-110 allows users to unlock their creativity and project instantly appealing visuals, with sharp WXGA resolution and 2,200 lumens brightness. Thanks to its discreet design, it can be used where a traditional projector may stand out. A black version is also available.

Simple, flexible implementation

A lightweight, adaptable design means the EV-110 can be installed in a variety of ways, from a traditional ceiling mount to a freestanding floor mount, or attached to a lighting track, including recessed lighting tracks.

Signage-ready

Featuring a built-in media player with wireless content upload, allowing playlists to be loaded onto an SD card and played directly from the projector¹. The EV-110 also features HDMI connectivity for simple integration into content management systems without specialist installation.

Advanced installations made easy

The GPI function supports direct sensor connectivity for creating dynamic experiences that can adapt to situational changes without the need for costly external hardware. The EV-110 also uses advanced techniques such as edge blending to achieve stunning results in larger spaces that require multiple unit installations.

Fit and forget reliability

A five-year warranty, combined with Epson's reliable laser light source technology and sealed optical engine, means that the EV-110 does not require regular maintenance.

KEY FEATURES

- **Experiential projection**
Create borderless content, lighting effects and blended displays with ease
- **Sensor-based content**
GPI function for simple sensor-based experiences
- **Flexible installation**
Can be ceiling-mounted, freestanding or attached to a lighting track
- **Signage-ready**
Built-in media player and simple CMS integration
- **Fit and forget reliability**
Durable Epson laser technology supported by a five-year warranty



EPSON
EXCEED YOUR VISION

PRODUCT SPECIFICATIONS

TECHNOLOGY

| | |
|-------------------|------------------------|
| Projection System | 3LCD Technology |
| LCD Panel | 0.59 inch with C2 Fine |

IMAGE

| | |
|---------------------|---|
| Color Light Output | 2,200 Lumen- 1,100 Lumen (economy) In accordance with IDMS15.4 |
| White Light Output | 2,200 Lumen - 1,100 Lumen (economy) In accordance with ISO 21118:2020 |
| Resolution | WXGA 2 |
| Aspect Ratio | 16:10 |
| Contrast Ratio | 2,500,000 : 1 |
| Native Contrast | 2,000 : 1 |
| Light source | Laser |
| Laser Light source | 20,000 hours Durability High, 30,000 hours Durability Eco |
| Keystone Correction | Manual vertical: $\pm 45^\circ$, Manual horizontal $\pm 40^\circ$ |
| Colour Reproduction | 16.77 million colours |

OPTICAL

| | |
|------------------------------|-----------------------------|
| Throw Ratio | 1.38 - 2.19:1 |
| Zoom | Motorized, Factor: 1 - 1.58 |
| Lens | Optical |
| Screen Size | 30 inches - 150 inches |
| Projection Distance Wide | 0.9 m - 4.5 m |
| Projection Lens F Number | 1.51 - 1.92 |
| Projection Lens Focal Length | 18.2 mm - 28.4 mm |
| Projection Lens Focus | Motorized |

CONNECTIVITY

| | |
|------------------|---|
| Interfaces | USB 2.0-A, USB 2.0 Type B (Service Only), Ethernet interface (100 Base-TX / 10 Base-T), Wireless LAN b/g/g 25GHz, HDMI in, Jack plug out, SD Card Slot, SD Card playback, Wireless LAN a/n (5GHz) |
| Network Protocol | HTTPS, IPv6, SNMP, ESC/VP.net, PJLink |

ADVANCED FEATURES

| | |
|-------------------|---|
| Security | Wireless LAN security, Password protection |
| Other features | A/V mute, Auto Power On, Digital zoom, Edge Blending, Horizontal and vertical keystone correction, Image Shift, Long light source life, Quick Corner, Web Control, Web Remote |
| Video Color Modes | Dynamic, Normal |
| Projector control | via: Crestron, Crestron Integrated Partner, Crestron RoomView |

LightScene EV-110

WHAT'S IN THE BOX

- Cable cover
- Direct mount unit
- HDMI Cable Clamp
- Power cable
- Remote control incl. batteries
- User's Manual Set
- Hexagon wrench
- Safety wire set



EPSON[®]
EXCEED YOUR VISION

PRODUCT SPECIFICATIONS

GENERAL

| | |
|---------------------------------------|--|
| Power consumption | 149 Watt, 112 Watt (economy), 0.4 Watt (standby), On mode power consumption as defined in JBMS-84 124 Watt |
| Supply Voltage | AC 100 V - 240 V, 50 Hz - 60 Hz |
| Product dimensions (default position) | 530 x 470 x 250 mm (Width x Depth x Height) |
| Dimensions: Projection Unit | Ø175 x 260 mm (Depth) |
| Dimensions: Power Supply | 361 x 110 x 65 mm (Width x Depth x Height) |
| Product weight | 5 kg |
| Noise Level | Normal: 34 dB (A) - Economy: 22 dB (A) |
| Supported Temperature | Operation 5° C - 40° C, Storage -10° C - 60° C |
| Supported Humidity | Operation 20% - 80%, Storage 10% - 90% |
| Included Software | Epson Creative Projection, Epson Projector Content Manager |
| Options | Floor stand, Lighting track mount |
| Room Type / Application | Projection Mapping, Signage / Retail, Visitor Attraction |
| Positioning | Ceiling Mounted, Floor, Lighting Track, Wall Mounted |
| Colour | White |

OTHER

| | |
|----------|---|
| Warranty | 60 months Carry in or 12,000 h Optional warranty extension available |
|----------|---|

LightScene EV-110

WHAT'S IN THE BOX

- Cable cover
- Direct mount unit
- HDMI Cable Clamp
- Power cable
- Remote control incl. batteries
- User's Manual Set
- Hexagon wrench
- Safety wire set

OPTIONAL ACCESSORIES

- Lighting Track Mount - ELPMB66W
V12HA32040
- Floor Stand - ELPMB55W - EV-100
V12H888W10

LightScene EV-110

LOGISTICS INFORMATION

| | |
|-------------------|---------------|
| SKU | V11HA22040 |
| EAN code | 8715946689326 |
| Country of Origin | China |



* Warranty offers are not available for all countries. Please contact your local Epson representative.

For further information please contact your local Epson office or visit www.epson-europe.com

Austria 01 253 49 78 333 Belgium +32 (0)2 792 04 47 Czech 800/142 052 Denmark 44 50 85 85 Finland 0201 552 091 France 09 74 75 04 04

(Cost of local call, operator charges may apply) Germany +49 (0) 2159/92 79 500 Greece +30 211 198 62 12 Hungary 06800 147 83 Ireland 01 436 7742

Italy 02-660321 10 (0,12 /min) Luxembourg +352 27860692 Middle East +9714 8872172 Netherlands +31 (0)20 708 5099 Norway +47 67 11 37 00

Poland 0-0-800 4911299 (0,16 zł/min) Portugal 707 222 111 Russia (095) 777-03-55 Slovakia 0850 111 429 South Africa (+2711) 465-9621

Spain 93 582 15 00 Sweden 0771-400135 (Mobilsamtal – 0,99 kr/min, Lokala samtal – 0,30 kr/min, Utlandssamtal – 0,89 kr/min) Switzerland 022 592 7923

Turkey (0212) 3360303 United Kingdom 0871 222 6702

1. Requires free Epson Projector Content Manager software or Epson Creative Projection app.

Trademarks and registered trademarks are the property of Seiko Epson Corporation or their respective owners. Product information is subject to change without prior notice.

EPSON®