

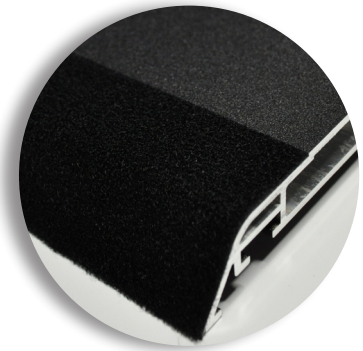
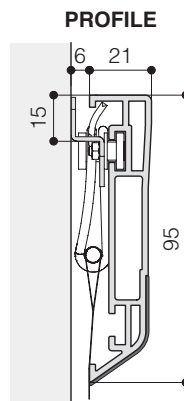
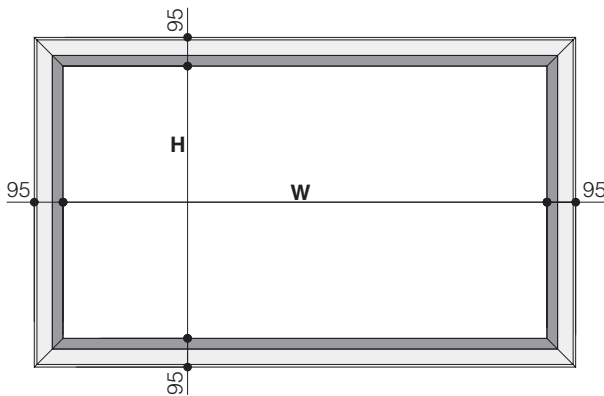


### TECHNICAL SPECIFICATIONS

**CANALETTO ELASTIC** is the newest exclusive design aluminium frame screen developed by ScreenInt R&D. The product is a unique innovative combination of a velvet finishing and a black aluminium frame. Once Canaletto Elastic is wall mounted, brackets are completely hidden, so it seems to **fly in the air**.

Available in 1:1, 4:3, 16:9 and 16:10 ratios and bespoke sizes.

- Frame dimensions: 95x21 mm. (WxD)
- Aluminium frame painted with dull black epoxy powders (RAL 9005) and partially covered with black velvet
- Total frame depth including wall mounting brackets: 27 mm.
- Completely hidden wall mounting brackets on upper and lower frame for SAFE installation
- Full aluminium corners cut at 45°
- Easy and quick fixing of the projection surface with galvanized rods and rubber bands
- Available with 4K, 3D and 2D projection fabrics
- Flame retardant projection surfaces – classification M1, M2 and B1



The measures in the drawings are expressed in millimetres.

### DIMENSIONS measures in cm

1:1 Ratio Viewing area (WxH)	4:3 Ratio Viewing area (WxH)	16:9 Ratio Viewing area (WxH)	16:10 Ratio Viewing area (WxH)	Approx. net weight (Kg)
160 x 160	160 x 120	160 x 100	160 x 90	11
180 x 180	180 x 135	180 x 112	180 x 101	13
200 x 200	200 x 150	200 x 125	200 x 112	15
220 x 220	220 x 165	220 x 137	220 x 124	16
250 x 250	250 x 190	250 x 156	250 x 140	19
300 x 300	300 x 225	300 x 187	300 x 169	23
-	350 x 265	350 x 219	350 x 197	27
-	400 x 300	400 x 250	400 x 225	31

### PROJECTION CLOTHS

Front projection surfaces	Gain	Rear projection surfaces	Gain
White	1.2	Rear Plus	1.1
HD Performer	1.3	Rear Lux R114	2.5
Lumi Grey	0.8	Front Rear	0.9
Cinesound*	0.7		
Microperforated	1.1		
Lumi Grey Microperforated	0.8		
Foldaway*	1.5		
Fibre Matte*	1.25		
Bright Contrast 3D 0.8*	0.8		
Ultra HD*	1.2		
Oyster* (ALR)	0.8		

\*Limited in height

Warranty: 24 months

