

Highlights:

- 3-way soundbar design
- Integrated Bluetooth receiver
- Clever bracket system included
- Integrated subwoofer
- Preset equalizer modes
- HDMI (ARC with CEC) input
- Optical & coaxial inputs (SPDIF)
- Included remote control

Product information:

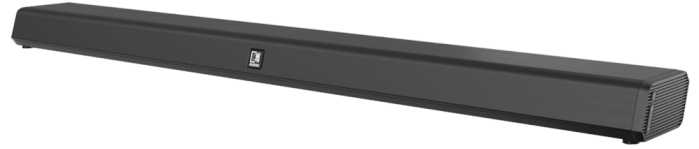
The IMEO2 Soundbar features a slim and elegant design and includes all required functions for expansion of any audiovisual system with an impressive sound, while having a minimal hassle for installation. It's perfectly suited for installations such as classrooms, presentation rooms or meeting rooms where it can be used and installed in combination with screens, smartboards or projectors.

The acoustics originate from a 3-way speaker construction, composed of two 1.5" high frequency drivers, two 2" mid frequency drivers and a low frequency section with two 2.5" low frequency drivers with an RMS rating. The power handling reaches an overall level of 60 Watt RMS. The Class-D amplifier with integrated WaveSelect DSP processing and transmission line configuration for the low-frequency drivers offers a crystalclear sound reproduction with stunning low-frequency response. Selectable DSP presets offer optimization for applications such as presentations, music playback or video's.

Various input possibilities such as an unbalanced line input, HDMI (ARC) input or SPDIF (optical and coaxial) allow compatibility with a variation of input sources, while an integrated 4.2 Bluetooth receiver allows wireless connections with portable devices. In installations with multiple IMEO's installed throughout the area, it can be desirable to assign custom Bluetooth ID's to distinguish them from each other. Typical applications are hotels, conference rooms, schools, ... The hotel mode function in the firmware offers a solution for these applications. An additional function is also implemented to define a specific wake-up source, allowing the IMEO2 to always turn-on with the same input source selected, no matter which input source was selected before power-down. An USB interface enables the playback or storage of media and voice files. In addition, the USB interface also allows the connection of memory device of your choice.

Quick side controls on the device allows input selection and volume control. These same tactile buttons permit to lock both input and volume, which again is very useful in hotel or education environments to set the right expectations.

An included IR remote control allows input selection, volume control and EQ preset selection while the unique and clever wall mounting bracket allows convenient mounting to walls on any kind of surface or location with an optimal guiding and coverage for the cables. The soundbar can be versatile mounted above or below any projection screen, in addition it is



Certification:



Additional Inputs:



Usage:



also possible to use the optional MBK440 screen mounting bracket to mount the professional soundbar on the wall or any trolley that is compliant with VESA200 to VESA700.

The auto standby function ensures that the IMEO is automatically put in energy-saving mode. This way, no unnecessary energy is lost, while the IMEO remains ready to play at any moment. This also means the IMEO2 has obtained an ENERGY STAR® certification.

Applications:

- Education
- Hotels
- Corporate
- Residential

System specifications:

Outputs	Power	2 x 15 W	
		1 x 30 W	
Sound Pressure (Max. W/1m)		90 dB	
Frequency	Response (± 3 dB)	40 Hz - 20 kHz	
THD+N (@ 1 kHz)		1%	
Bluetooth specification		V4.2	
		Class 2 output power	
Drivers	HF	2 x 1.5"	
	MF	2 x 2"	
	LF	2 x 2.5"	
Power	Consumption	30 W	
	Source	100 ~ 240 V AC / 50 ~ 60 Hz	
	Consumption	Standby	0.5 W
Inputs	Connector	3.5 mm Jack (Unbalanced)	
		Coaxial SP/DIF digital input	
		HDMI ARC	
		USB Playback (MP3, FLAC, WAV)	
		Optical & coaxial inputs (SPDIF)	
Control		Remote control (IR)	
		Selection / volume switches (side panel)	
Energy certification		Energy Star 3.0	

Product Features:

Weight		4.24 kg
Dimensions		1000 x 60.8 x 111.3 mm (W x H x D) (Excl.bracket)
		1000 x 60.8 x 134.8 mm (W x H x D) (Incl.bracket)
Colours		Black
Mounting & handling		Mounting wall bracket
Front finish		Steel grill
Construction		ABS
Accessories	Included	Power cable
		Wall mounting bracket
		Remote control (IR)
		3.5 mm jack audio cable (1 meter)
		3.5 mm jack audio pigtail (0.15 meter)
		90° HDMI angle adapter

Standards & regulations:

CE	LVD	Compliant to EN 62368
	EMC	Compliant to EN 55032, EN55024, EN 61000-3-2/3
CB		Compliant to IEC 62368
FCC		Part 15C
cTUVus		Compliant to IEC 62368+UL62368
RoHS		Compliant
Reach compliant		Compliant
RED		Compliant to EN301489-1, EN301489-17, EN300328

Variants:

- IMEO2/B - Black version